

Out of sight  
All in the ear  
Good to go

**FUSE**<sup>™</sup>  
Open evolves

# Instant fit

This is an instant age: fast, direct and to the point. Fuse™ – the first-ever crossover hearing instrument – fits the times. It's completely in the ear, open fit, fully featured and good to go during the first consultation using standard domes. It's easy on everyone and offers immediate results. There's nothing to wait for. Nothing to see. Everything to offer.

# Out of sight

Fuse sparks an entirely new crossover class of hearing instrument, combining everything you love about open fit BTEs and seriously small CICs. The enviable performance, sophisticated feature set and comfort of ultra-small BTEs now reside completely in the ear – no tubes, no wires, no additional accessories. Occupying 45% less volume in the ear canal than a typical CIC, what you don't see may just turn your head.

# Inside open

There's a new shape in town. A completely new form of venting means Fuse can be both open fitting and deep in the ear canal – a purpose-driven innovation that combines the most desirable performance and comfort attributes of an ultra-small BTE with the near invisibility of a CIC. Uniquely shaped dual-flow™ vents ensure there's always an open path to the ear canal, for more natural sound and occlusion-free listening.

# Extreme comfort

Ear canals change shape – when you talk, when you chew, when you swallow. That anatomic reality is a challenge for hearing instruments with inflexible shells worn completely in the ear canal. Fuse is different. The world's first flexible, articulating joint moves with you – naturally – to prevent pressure points in the ear and reduce the chance that the hearing instruments will work their way out of place. Naturally angled Fuse flexes for maximum comfort, but stays in position to deliver exceptional sound quality. See nothing. Hear everything. Feel the difference.

# High tech

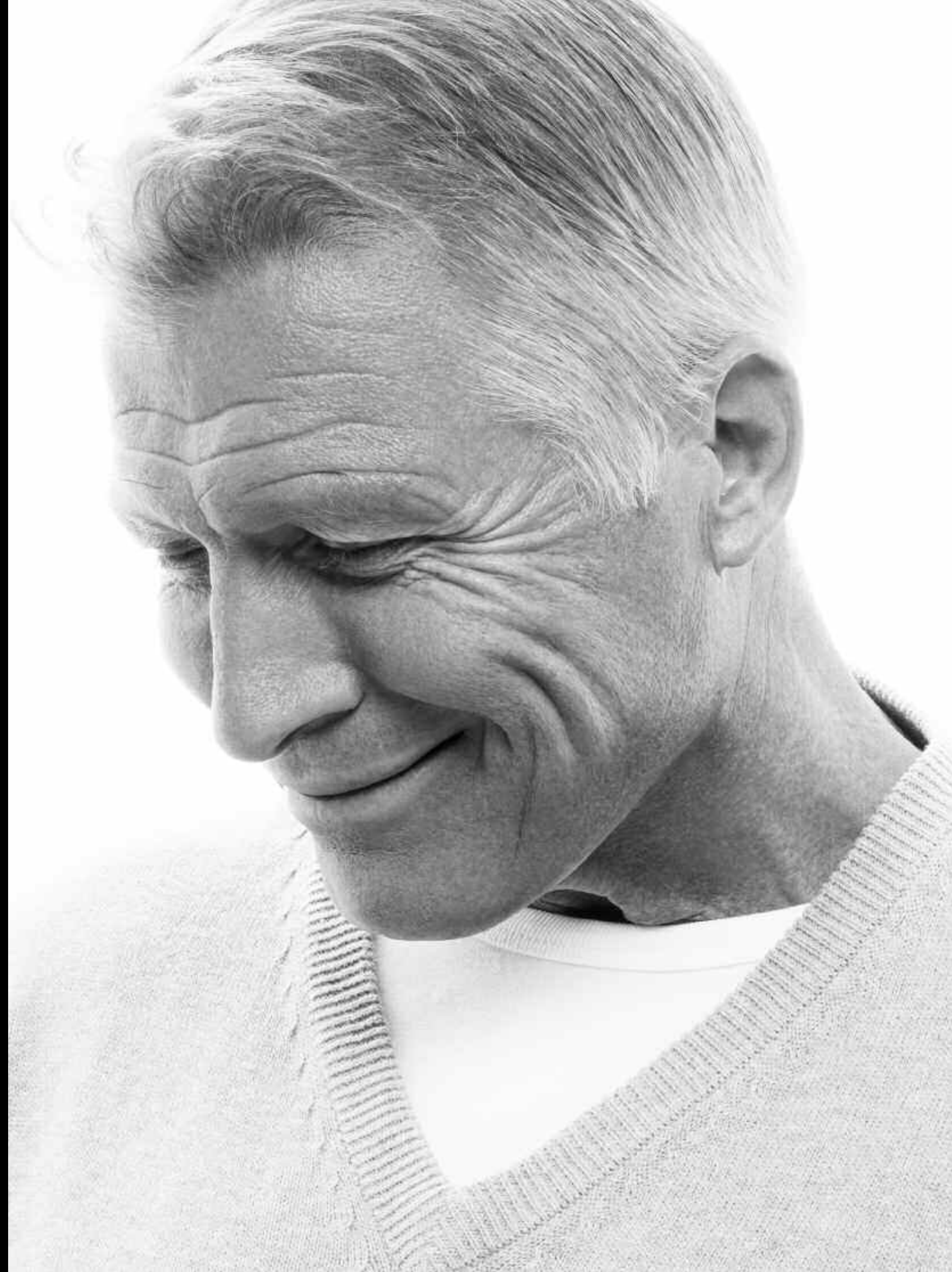
Fuse is the first hearing instrument in the world to offer a full set of premium to advanced features in an instant fit that's concealed completely in the ear. The no-compromise feature set includes smartFocus™ technology, self learning capabilities, automatic programs and the convenient Smart Control remote.



# Open evolves

Crossover to Fuse. The modern shape of more satisfying listening.

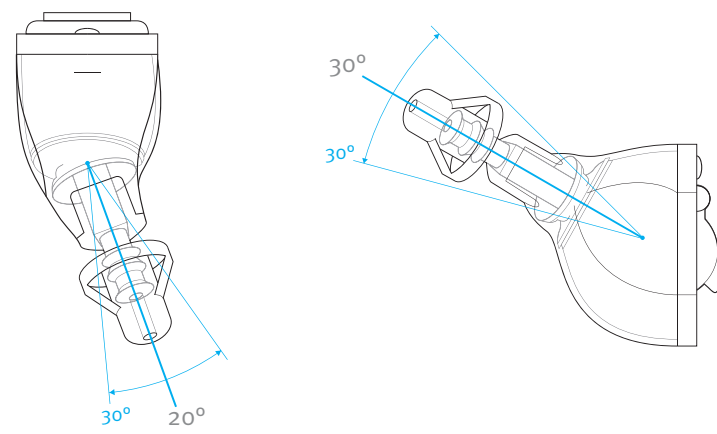




# Articulating joint

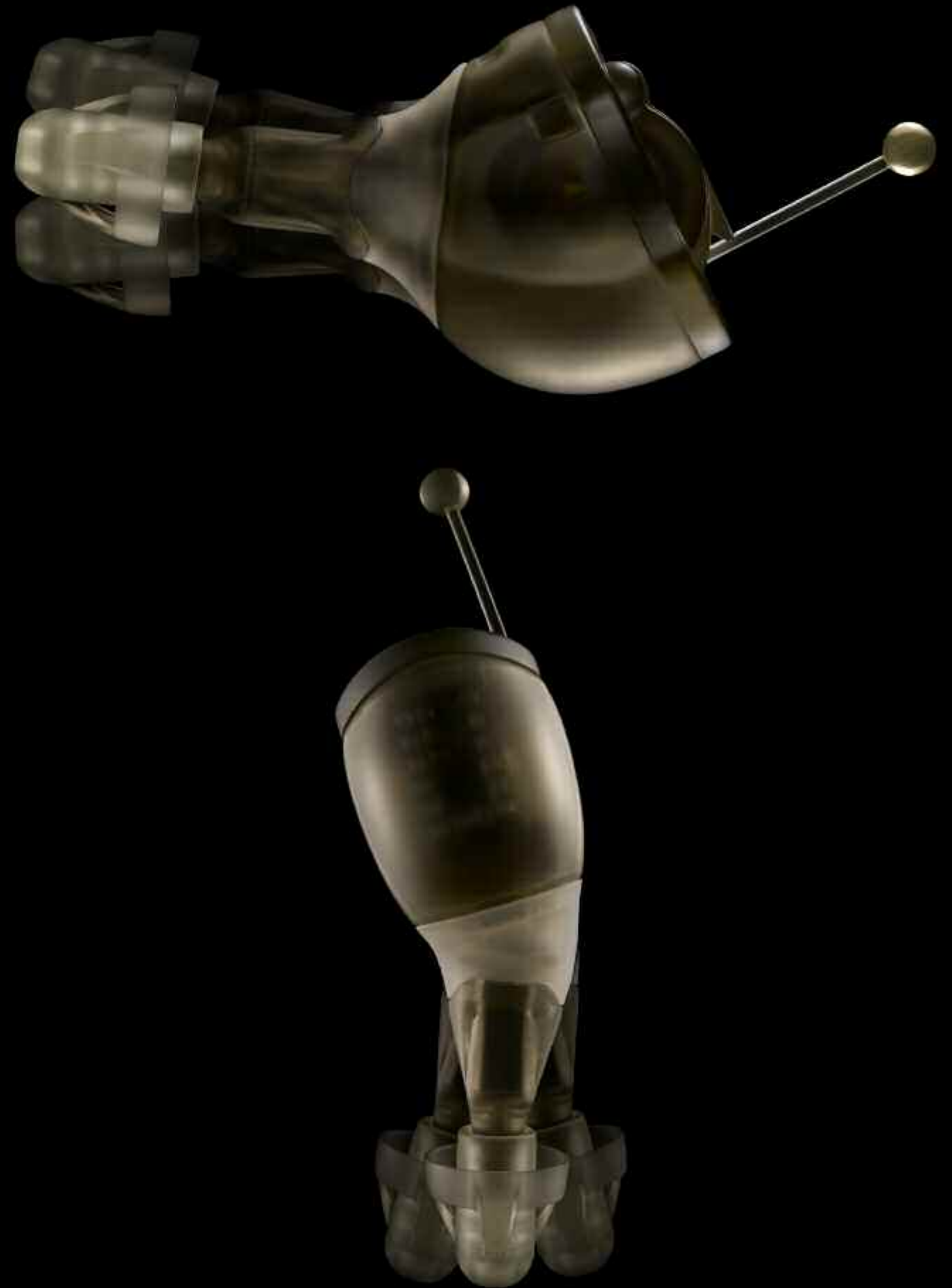
There's a small but precise point where change happens – and it changes everything. Fuse's change point is the articulating joint. This ground-breaking feature readily adapts to fit different ear canal shapes and sizes, and moves in sync with the natural changes in the ear canal when the jaw moves during speech and chewing. The articulating joint provides the most comfortable fit by eliminating pressure points as the ear canal moves, and reducing the possibility that the hearing instrument will work its way out of position. Fuse wearers derive even more comfort from the naturally correct angles of the hearing instrument, developed using complex 3D fit rate studies of 500 ear scans. Left ear and right ear versions further enhance Fuse's fit accuracy. Together, these anatomically precise design features contribute to Fuse's high rate of fitting success. Clearly, change is good.

Fuse's articulating joint provides greater comfort and retention with a range of motion of 30 degrees.



Angled medially 20 degrees

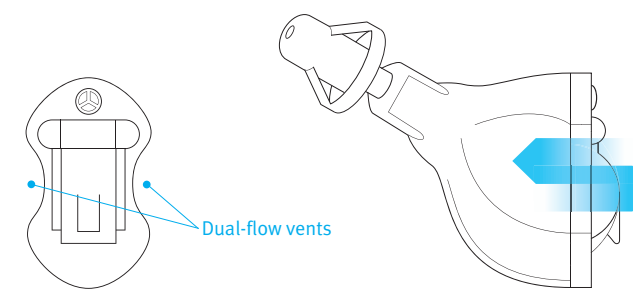
Angled superiorly 30 degrees

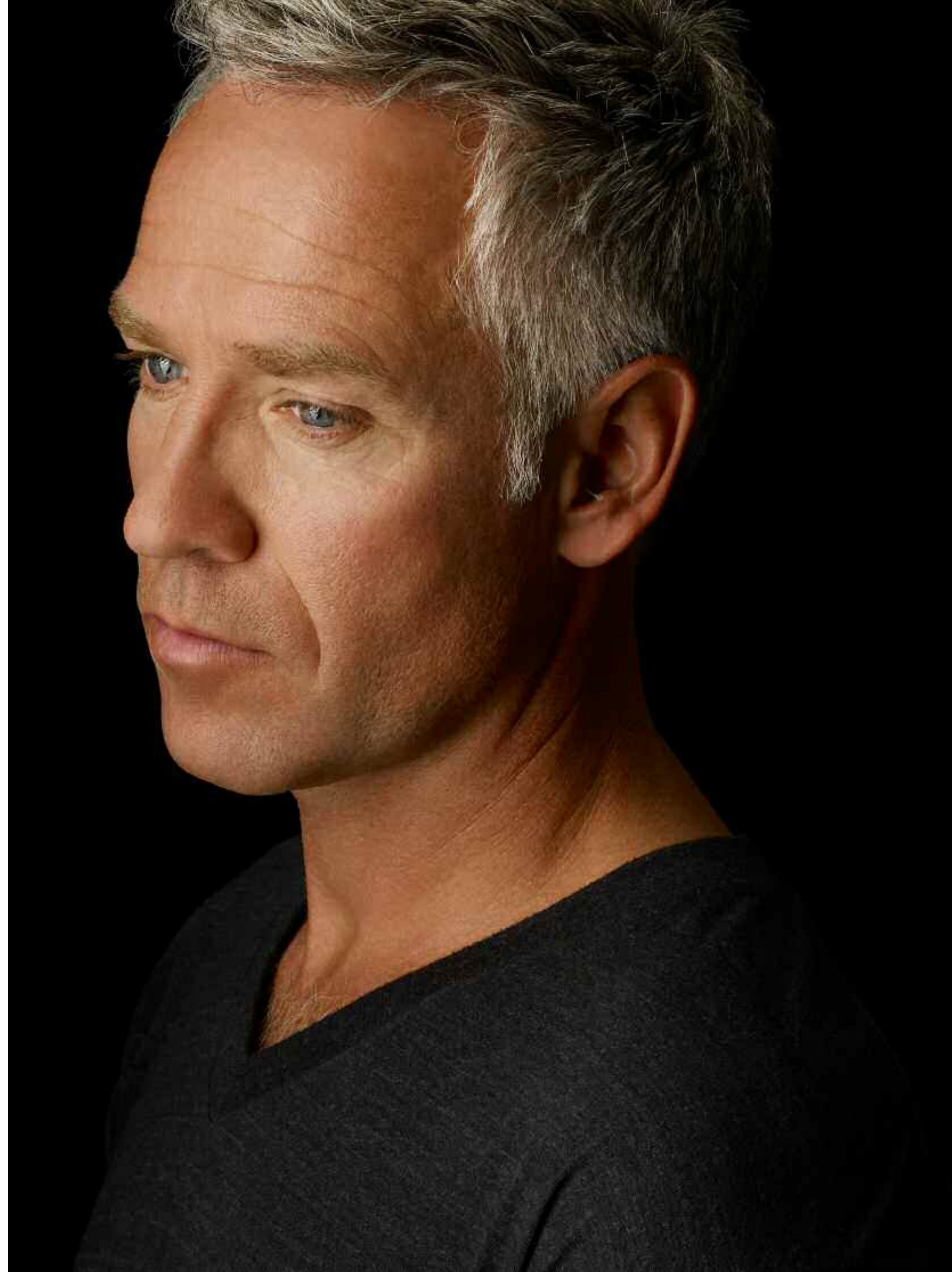




## Dual-flow™ vents

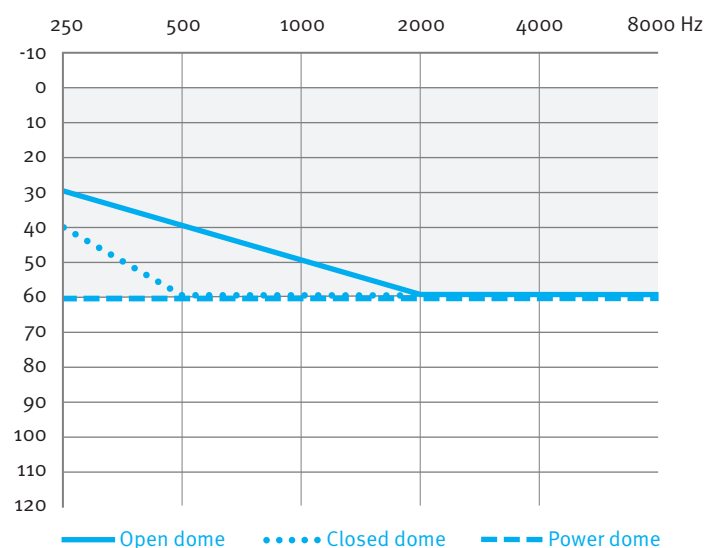
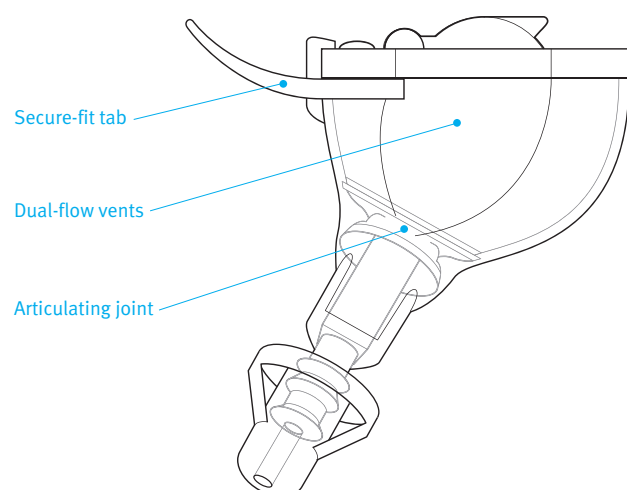
Fuse is the evolution of the open fit. It's an enlightened crossover solution – out of sight, natural sounding and occlusion-free – thanks to innovative venting technology. In the past, the aesthetic advantages of a completely in the canal hearing instrument have sometimes come with trade-offs. Compromise no longer. Fuse is concealed in the ear canal yet remains comfortably open fitting, thanks to wide open dual-flow vents that provide a free flow of air, and the most natural sound of one's own voice. Twin vents ensure that at least one vent always remains clear, even if the second should become obstructed. And the deep cut-away design of the dual-flow vents makes Fuse even smaller than a typical CIC. Inside is open and sound quality has never been better.





# FUSE™ – to the point

Fuse is like no other hearing instrument. Available in a choice of technology levels, the all-new crossover design brings together the most desired features of an ultra-small BTE with new, purpose-driven innovations – all concealed inside the ear.



| OVERVIEW            |                            | Passport™ FUSE™                | Latitude™ 16 FUSE™             | Latitude™ 8 FUSE™         |
|---------------------|----------------------------|--------------------------------|--------------------------------|---------------------------|
| PERFORMANCE         | Max gain (2cc)             | 40 dB                          | 40 dB                          | 40 dB                     |
| PROFILE             | Max output (2cc)           | 109 dB                         | 109 dB                         | 109 dB                    |
|                     | Range of loss              | mild to moderately severe      | mild to moderately severe      | mild to moderately severe |
|                     | Battery size               | 10A                            | 10A                            | 10A                       |
|                     |                            |                                |                                |                           |
| SIGNATURE FEATURES  | SmartFocus™                | •                              | •                              |                           |
|                     | Self learning              | learning volume and smartFocus | learning volume and smartFocus |                           |
|                     | LearnNow™                  | •                              |                                |                           |
|                     | Automatic program          | autoPro™4                      | autoPro™3                      | autoPro™2                 |
|                     | Feedback management system | •                              | •                              | •                         |
|                     | Data logging               | program, volume and smartFocus | program, volume and smartFocus | program and volume        |
| ADDITIONAL FEATURES | Channels                   | 20                             | 16                             | 8                         |
|                     | Manual listening programs  | up to 3                        | up to 3                        | up to 3                   |
|                     | Microphone strategy        | omnidirectional                | omnidirectional                | omnidirectional           |
|                     | Speech enhancement LD      | •                              | •                              | •                         |
|                     | Noise reduction            | •                              | •                              | •                         |
|                     | AntiShock™                 | •                              | •                              | •                         |
|                     | Wind noise manager         | •                              | •                              | •                         |
|                     | MyMusic™                   | •                              | •                              | •                         |
|                     |                            |                                |                                |                           |
| ACCESSORIES         | Smart Control (optional)   | •                              | •                              | •                         |



Smart Control and Fuse™ shown at actual size.

At Unitron, we care deeply about people with hearing loss and work closely with hearing healthcare professionals to make advanced, purpose-driven solutions available to everyone.