

Indigo™ Custom AutoPro4™

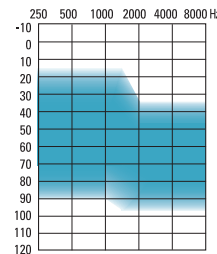
16 Channels, 16 Bands, Multiband Adaptive Directionality

HEARING AID FEATURES

- AutoPro4™ intelligently analyzes the input signal and quickly adapts to 1 of 4 distinct destinations. Within each of these 4 destinations the adaptive features can be customized for optimal listening and comfort
- Multiband adaptive directional microphone system tracks and suppresses up to 16 different moving noise sources, while focusing on sounds from the front
- AntiShock™ instantaneously reduces the level of impulse noises such as a door slam, while maintaining the quality and intelligibility of speech
- Speech enhancement LD analyzes the input signal and automatically emphasizes speech signals independently in each of the 16 bands. The amount of speech enhancement applied is based on the input level of the identified speech signals.
- Phase canceller continuously monitors for feedback and accurately calculates the required counter signal for feedback cancellation
- MyMusic™ enhances the music listening experience by bringing out the rich, full tones of music
- Noise reduction analyzes input and automatically reduces noise signals independently in each of the 16 bands
- Wind noise manager intuitively engages based on moderate or high wind conditions
- Ideal volume indicator provides a beep notification when correct gain is reached on the volume control
- Data logging accurately records the wearer's usage, volume control changes and manual program use
- 16 channels provide high resolution signal processing
- 3 additional manual programs provide customization for individual needs and preferences
- Low battery warning
- Start up delay
- On/Off by opening or closing the battery door
- Indigo™ can be programmed using NOAH-compatible U:fit™ and Standalone U:fit fitting software

OPTIONS

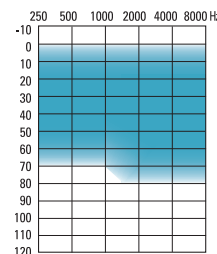
- OnBoard™ control is easily configured as a volume control or program button
- Telecoil (Y) or Microphone/Telecoil (MT) option can be set as one of the three manual programs
- Easy-t can be set to provide automatic switching to a dedicated telephone program



Fitting Guide



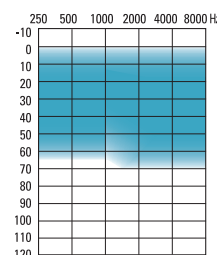
122/60
Full Shell Power



Fitting Guide



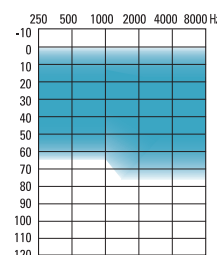
115/50
Full Shell



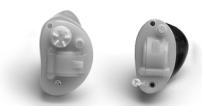
Fitting Guide



113/48
Half Shell / Canal



Fitting Guide



112/40
Mini Canal / CIC

Indigo Custom is suitable for fitting mild to severe hearing losses; they can fit audiogram configurations ranging from reverse to precipitously sloping.

ANSI S3.22-1996 / IEC 118-7 2CC COUPLER TECHNICAL DATA		ANSI S3.22-1996 / IEC 118-0 OES COUPLER TECHNICAL DATA					
CIC/ Mini Canal	Canal/ Half Shell	Full Shell	Full Shell Power	CIC/ Mini Canal	Canal/ Half Shell	Full Shell	Full Shell Power
OSPL90 Maximum HFA at 1.6 kHz				OSPL90 Maximum Output at 1.6 kHz			
112 dB	113 dB	115 dB	122 dB	122 dB	123 dB	125 dB	131 dB
108 dB	109 dB	110 dB	119 dB	114 dB	115 dB	116 dB	130 dB
106 dB	107 dB	108 dB	121 dB				
Full on Gain (input 50 dB) Maximum HFA at 1.6 kHz				Full on Gain (input 50 dB) Maximum at 1.6 kHz			
40 dB	48 dB	50 dB	60 dB	51 dB	58 dB	60 dB	70 dB
33 dB	41 dB	42 dB	53 dB	40 dB	49 dB	50 dB	64 dB
32 dB	40 dB	40 dB	56 dB				
Basic Frequency Response (based on Indigo 118/50) Frequency Range (Hz) Reference Test Gain (ANSI 1996)				Basic Frequency Response (based on Indigo 118/50) Frequency Range in Hz (DIN) Reference Test Gain			
200-7000	200-7100	200-6500	200-5600	200-7600	200-8000	200-7100	200-5300
31 dB	32 dB	33 dB	42 dB	33 dB	39 dB	40 dB	54 dB
Induction Coil Sensitivity (ANSI 1996, 31.6 mA/m) (based on Indigo 118/50) HFA SPLITS STS				Induction Coil Sensitivity (1 mA/m) (based on Indigo 118/50) Maximum at 1.6 kHz			
91 dB	92 dB	94 dB	102 dB	80 dB	89 dB	90 dB	100 dB
0 dB	0 dB	1 dB	0 dB	70 dB	79 dB	80 dB	96 dB
1.0 mA	1.1 mA	1.1 mA	1.1 mA	1.0 mA	1.0 mA	1.0 mA	1.1 mA
90 h	135 h	260 h	260 h	90 h	150 h	290 h	260 h
22 dB	22 dB	22 dB	22 dB	21 dB	21 dB	21 dB	21 dB
Test Conditions: Battery: 10/312/13 Source: Voltage 1.3 V Impedance: 16/7.5/7.5 Ohms Vent: Closed at canal end The measurement data obtained with hearing aid set to Omni mode, all adaptive features disabled.				Current Drain at RTG Typical Battery Life Equivalent Input Noise at RTG Total Harmonic Distortion at 500 Hz at 800 Hz at 1600 Hz EMC immunity by ANSI C63.19-2001 EMC Low Band and High Band Omni Mode/Telecoil		Current Drain at RTG Typical Battery Life Equivalent Input Noise at RTG Total Harmonic Distortion at 500 Hz at 800 Hz at 1600 Hz EMC immunity by IEC 118-13, Field Strength 75/50 V/m, Omni mode IIRL Low/High band dB SPL	
5%	5%	5%	5%	5%	5%	5%	5%
4%	4%	4%	4%	4%	4%	4%	4%
4%	4%	4%	4%	4%	4%	4%	4%
M4/T4	M4/T4	M4/T4	M4/T4	37/38	38/38	36/40	38/38

We reserve the right to change specification data without notice as improvements are introduced.